



TO LET

28 Brookfields, Lydney, Gloucestershire, GL15 4BX

£339,995



- Modern Living
- EV Charger Point
- Detached with Garage
- 4 Bedroom
- Stunning Location

Available from 07/09/2024

'The Carcroft' is a four bedroom detached home with detached garage, open plan kitchen/diner, lounge, ground floor WC, family bathroom and en-suite to master bedroom.

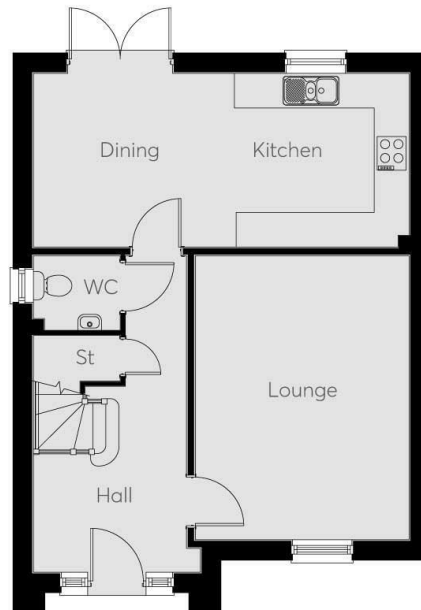
THE PROPERTY

'The Carcroft' is a four bedroom detached home with detached garage, open plan kitchen/diner, lounge, ground floor WC, family bathroom and en-suite to master bedroom.

Take a stroll into the historic market town of Lydney and browse amongst the local shops and cafes. Relax in Bathurst Park or take in the historic Harbour for spectacular views across the Severn Estuary. From Lydney, the 'Gateway to the Forest', discover the wide range of activities available throughout the Forest of Dean, including kayaking, zip-wires, caves, mountain biking and cycle tracks. Or for something more relaxing, take the Dean Forest railway and enjoy the many walks and spectacular views.

Enjoy life in Lydney, follow the A48 along the Severn Valley from Chepstow, with its historic riverfront Norman Castle, to the Cathedral City of Gloucester, with its historic dock area and Gloucester Quays shopping outlet. As the river narrows towards Gloucester, watch the annual Severn Bore or join the surfers and canoeists as the wave rises and gathers momentum.

The community is fast evolving and with it a host of amenities that we are providing from allotments to an outside gym, bike hire, walking and jogging trails, to a gorgeous wetland full of natural wildlife and all of our residents' doorstep.



SITUATION

Directions